

# Wound Care Guidelines

Wound Care Guidelines are meant as a starting point for treatment based on wound bed characteristics. As a wound evolves, treatment modalities may change as well. See backside for specialized wound types and interventions.

1. Cleanse wound with Normal Saline. Apply SurePrep Rapid-Dry to periwound and under adhesive contact areas.
2. Assess depth and drainage. Select from appropriate rows below.
3. Proceed through columns D, I, M and E to determine appropriate primary dressing based on wound characteristics.
4. Go to the last column, S to determine the cover dressing, based on drainage or anatomical location.

D Debridement	I Infection	M Moisture Balance	E Edge
------------------	----------------	-----------------------	-----------

Primary Dressings in columns D, I, M and E are placed directly against wound bed. Proceed to GREEN column for cover dressing

S Supportive Products
--------------------------

Cover Dressings

Does the wound need debridement? Is there slough or eschar? If YES, see below. If NO, move to the BLUE column. <b>Do not debride stable eschar from heels or feet.</b>	Is the wound infected or inflamed? Is there odor, increased drainage, periwound erythema? If YES, see below. If NO, move to the YELLOW column.	What is the moisture status of the wound? All wounds not needing D or I will fall into M or E. See below. If wound is stalled, go to the PINK column.	Is the wound stalled? Is there concern about biofilm? Has there been no progress in 2 weeks despite a clean wound bed? If YES, see below. If NO, you should move back to the YELLOW column. If epibole / rolled wound edges are present, consult provider.
--	--	---	--

Supportive Products are used as secondary dressings and differentiated by wound type and anatomical location. See next page for interventions.

Daily Dressing Changes:  
**Bordered Gauze**

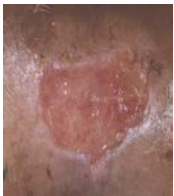
Dry wounds:  
**Optifoam Gentle Lite**

Wet Wounds:  
**Optifoam Gentle Liquitrap**

Heel Wounds:  
**Optifoam Heel** secured with tape or rolled gauze

Sacral Wounds:  
**Optifoam Gentle Liquitrap Sacral**. Consider lining bottom edge with **Pinc Zinc Oxide Fixation Tape**

\*All dressings should be changed if >75% strikethrough is observed.



Shallow & Dry/Moist

Apply **PluroGel** Q 1-3 days and PRN.

Apply **Opticell Ag** saturated with saline Q 7 days and PRN\*.

Apply **Optifoam Gentle Lite** Q 7 days and PRN\*. A secondary dressing is not needed.

Apply **PluroGel** to wound bed daily x 7 days then change to **Puracol Plus** saturated with saline. Change Q 7 days and PRN\*.



Shallow & Wet

Apply **PluroGel** Q 1-3 days and PRN.

Apply **Opticell Ag** Q 7 days and PRN\*.

Apply **Optifoam Gentle Liquitrap** Q 7 days and PRN\*. A secondary dressing is not needed.

Apply **PluroGel** to wound bed daily x 7 days then change to **Puracol Plus**. Change Q 7 days and PRN\*.



Deep & Dry/Moist

Apply **PluroGel** to wound bed and fill depth with **Opticell** saturated with saline Q 1-3 days and PRN.

Fill depth with **Opticell Ag** saturated with saline Q 7 days and PRN\*.

Fill depth with **Opticell** saturated with saline Q 7 days and PRN\*.

Apply **PluroGel** to wound bed and fill depth with **Opticell** saturated with saline daily X 7 days then change to **Puracol Plus** and fill depth with **Opticell** saturated with saline Q 7 days and PRN\*.



Deep & Wet

Apply **PluroGel** to wound bed and fill depth with **Opticell** Q 1-3 days and PRN.

Fill depth with **Opticell Ag** Q 7 days and PRN\*.

Fill depth with **Opticell** Q 7 days and PRN\*.

Apply **PluroGel** to wound bed daily and fill depth with **Opticell** X 7 days then change to **Puracol Plus** and fill depth with **Opticell** Q 7 days and PRN\*.

# S

## Supportive Interventions

To utilize the supportive interventions, determine the etiology of the wound on the left and consider the supportive interventions listed in the second column. NPUAP definitions and illustrations are linked by clicking on the words "Pressure Injuries" and on the images of each pressure injury.

Wound Etiology	Supportive Interventions
----------------	--------------------------

### Pressure Injuries

#### Evaluate need for:

- Support Surface / Seating System
- Turning & Repositioning devices – **Comfort Glide**
- Heel Off-Loading – **HeelMedix**
- Nutritional Support



#### Medical Devices or tubes :

- Evaluate size and securement of device
- Cleanse with normal saline
- Apply Sure Prep Rapid Dry

#### For at risk areas:

- Consider **Optifoam thin**

#### For reddened areas or areas with minimal drainage:

- Consider **Dermagel**

#### For areas with moderate drainage:

- Consider **Optifoam Gentle**

#### For areas with heavy drainage:

- Consider **Quick** dressing

### Surgical Wounds



Consider **Optifoam Gentle Post-Op** surgical dressing

## Alterations of Skin Integrity



### Skin Tears

- Cleanse with **Skintegrity Wound Cleanser**
- Reposition flap when present with moistened applicator
- Apply **Sureprep Rapid Dry** around wound edges
- Apply **Optifoam Gentle Liquitrap**. Change Q 7 days & PRN\*.



### Perineal/ Peritubular Denudation

- Cleanse with **Remedy Foaming Body Cleanser**.
- Apply **Z-Guard** BID and PRN due to incontinence or excessive drainage.
- Make sure not to excessively scrub during removal.



### Fungal Rash

- Cleanse area with **Remedy Foaming Body Cleanser**
- Apply **Remedy Antifungal Ointment** BID and PRN x 14 days due to incontinence or **Remedy Antifungal Powder** with **Ultrasorbs Dry Sheets** BID and PRN X 14 days due to excessive moisture in skin folds.



### Intertriginous Dermatitis

- Cleanse with **Remedy Foaming Body Cleanser**.
- Apply **Ultrasorbs Dry Sheets**. Change daily and PRN due to excessive moisture.



### Intact compromised skin

- Cleanse with **Skintegrity Wound Cleanser**.
- Apply **Sureprep Rapid Dry** directly to compromised area QD and PRN
- Offload as appropriate.

Guideline Product Education Guide – click on image for online application video



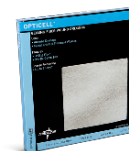
Skintegrity Wound Cleanser



Sureprep Rapid Dry



PluroGel



Opticell



Opticell Ag



Optifoam Gentle Lite



Optifoam Gentle Liquitrap



Optifoam Gentle Liquitrap Sacrum



Optifoam Heel



Puracol Plus



Bordered Gauze

OptiLock



Cleansing Foam



Z-Guard



Antifungal Clear/ Powder



Ultrasorbs Dry Sheets

Questions?  
Call the Skin Health Solutions Hotline  
888-701-SKIN (7546) M-F 9-6 EST